

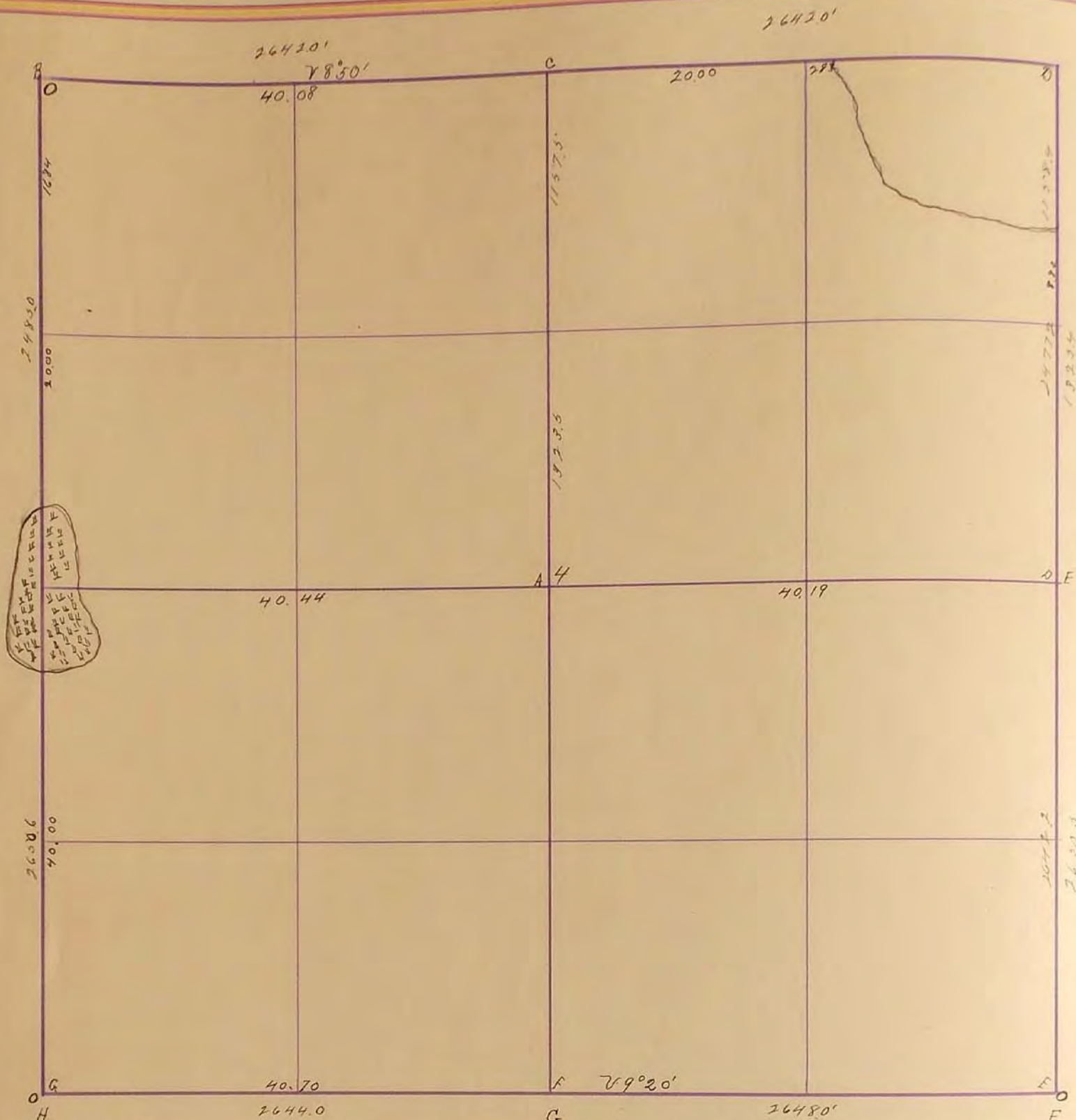
SURVEYOR'S RECORD

Section 4

Township 108

Range 39

45



- A. Post and Mound
- B. stone 4x4x9
- C.
- D. Gov. Mound
- E. Gov. Mound
- F. " "
- G. Post Mound + Bits

- G" Stone" R.P. Tack in Blazed Grace post NW 332'; R.P. Tack in Blazed Grace post NE 402'
- H" Stone" R.P. Tack in N.W. Cor. fence post 452'; R.P. Tack in NE Cor fence post 462'
- H" Placed iron pin 3" below road grade 1967
R.P., N&C., P.P., N&E 60.4'; R.P., N&C., T.P., NW 70.4'
R.P., N&C., T.P. SW 68.3'

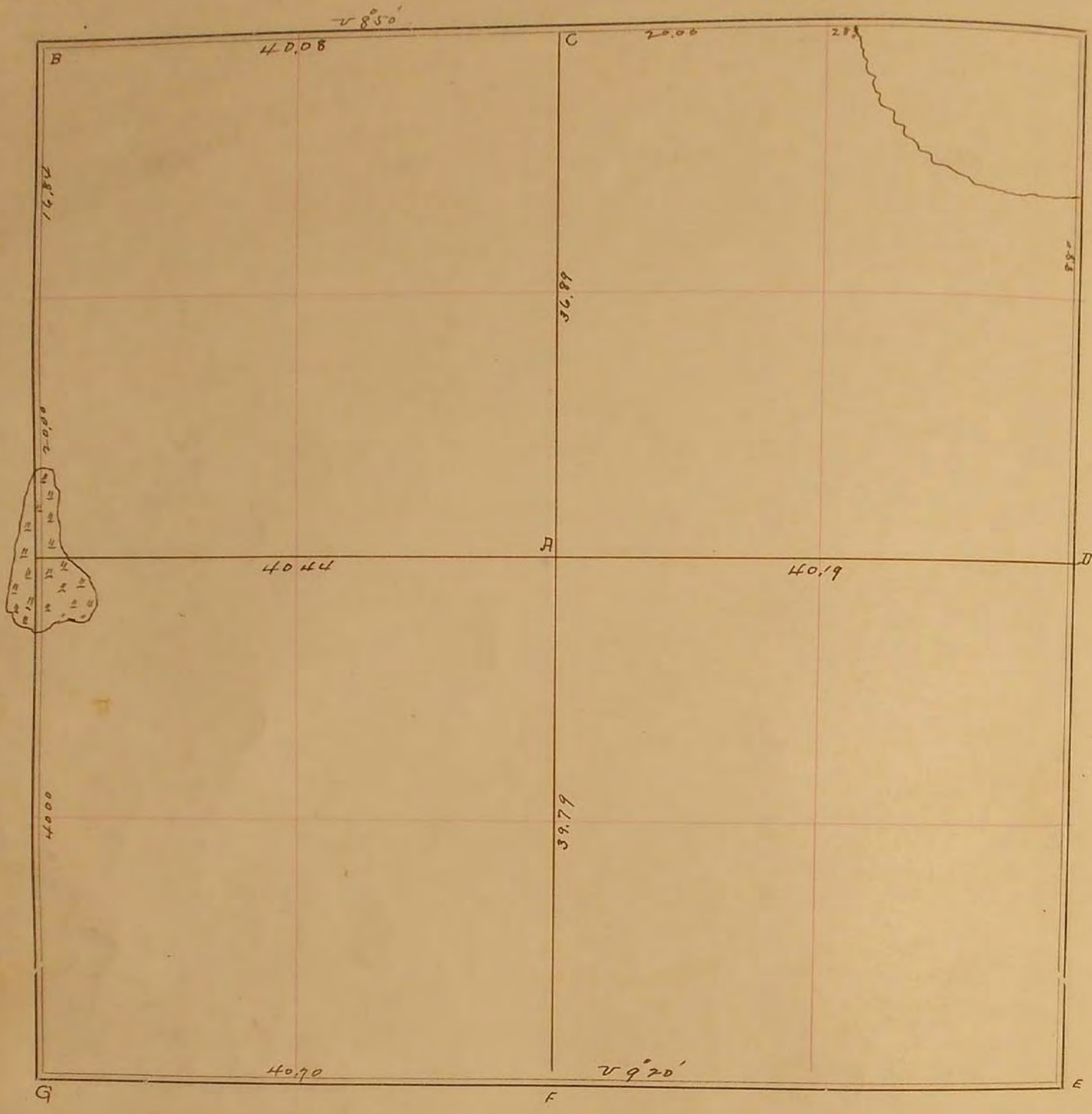
o Indicates Gov. Corners see Page 240
Oct 13 - 1930

- A. Found old cor fence post in corner
- C. Found old stone
- D. Located by measuring from Redwood Co. cor. 134 links east and on Redwood Co. line
- E. Established D-F. and on line
- F. Found old corner fence running north on line 29.1' F. cor. 447.5W. T.P. 422 NE. F. cor. 470.3 E
- G. Found old stone F. cor 32 N and 8" east old concrete Post 332.4. on line
- H. stone 12x12x34 sharp on top and. F. cor 448 S.E. F. cor 45.0 S.W. - F. cor. 459' N.W. - F. cor 460 N.E.
- I. Found old cor. F. cor 28' East and on line

SURVEY No. 21

1330
2670

Section 4 Town 106 Range 39

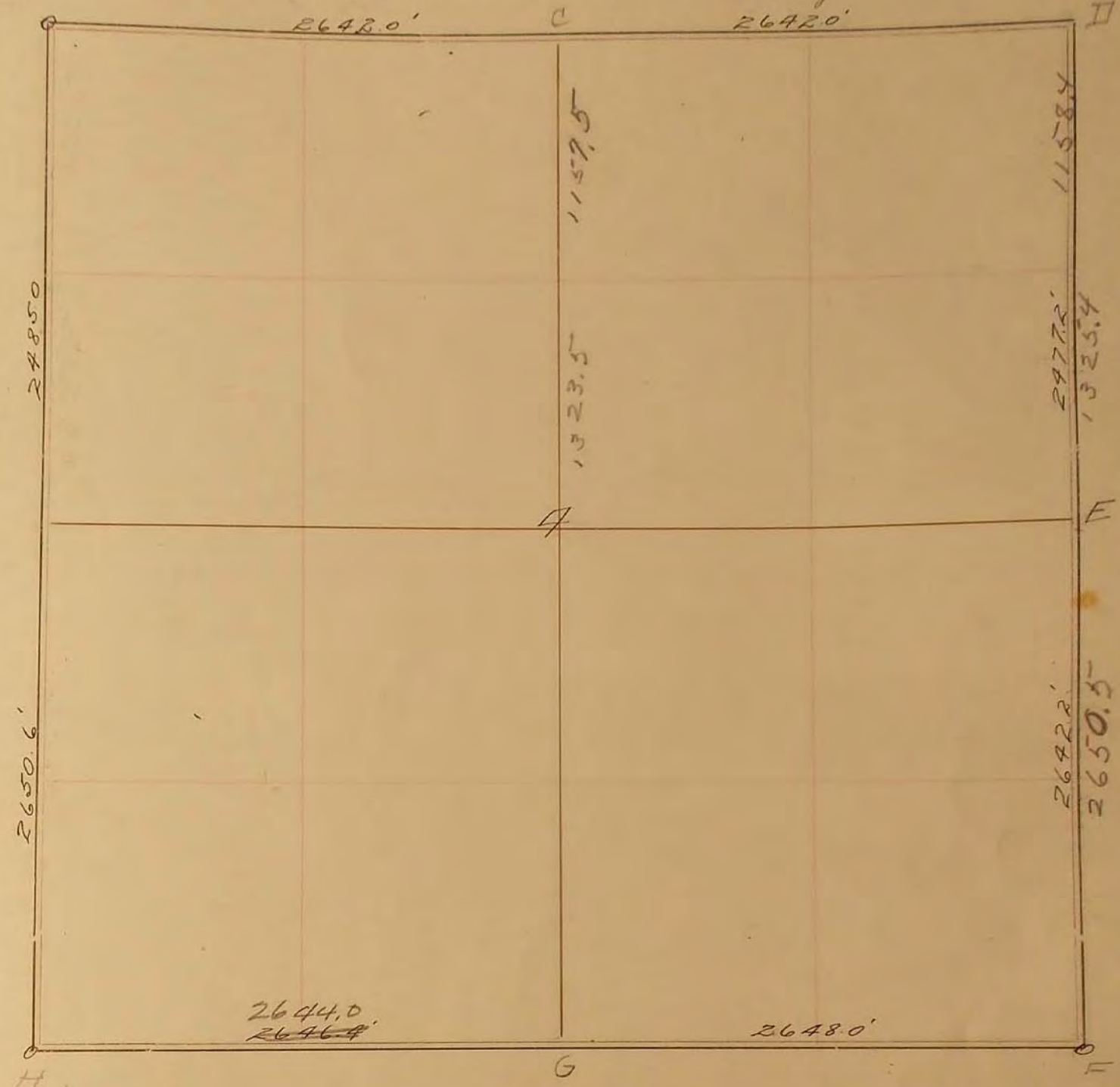


FIELD NOTES.

- A Post & marked
- B Stake 4 x 4 x 9
- C
- D Low mound
- E " "
- F " "
- G Post marked & pits

SURVEY No. _____

Section 4 Town 108 Range 39



FIELD NOTES.

o Indicates Gov't corners.
See page 240.

- Oct. 13, 1930
- A. Found old cor. fence post in corner.
- C. Found old stone
- D. Located by measuring from Reduced Co. Cor. 13d links east, and on Reduced Co. line.
- E. Established D-F and on line
- F. Found old corner fence running north on line 29.1' ^{TP. 422-NE Cor. 47.0 SW} _{Cor. 44.2 SW}
- G. Found old stone 9' cor. 32' N and 8" east, old concrete Post. 33' S + on line.
- H. Stone 12x12x34 sharp on top end, Cor. 44.8 SE, Cor. 45.0 SW - Cor. 46.9 N.W. - Cor. 46.0 ^{ENE}
- I. Found old cor. 7' cor. 28' East and on line.